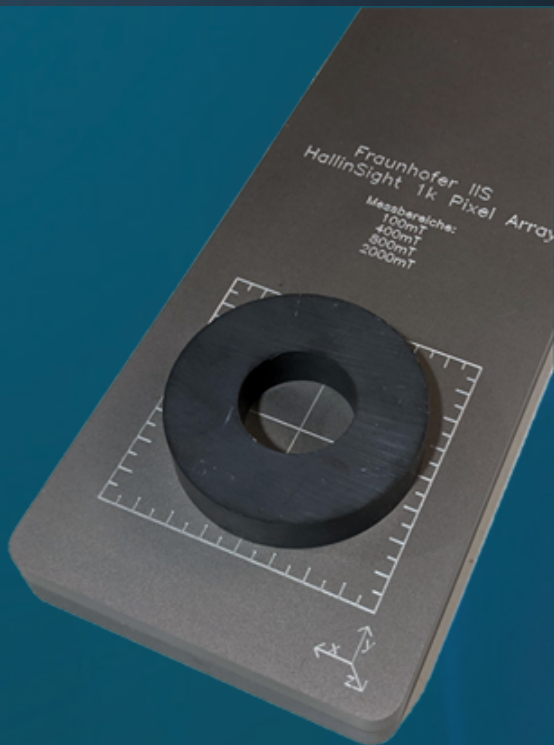


HALLINSIGHT® HALL MAGNETIC FIELD CAMERA AC&DC TRUE 3-AXIS MAGNETIC FIELD MAPS



HallinSight® 32x32, 16x16 and 32x2 3-axis Hall sensor arrays.

Easy-to-use Hall magnetic field camera to map and characterize static or dynamic magnetic fields.



Orthogonality error <math>< 0.1^\circ</math>



DC or AC magnetic fields



Field strengths to 2 T



Resolution 4 μ T



3-axis calibration



Dedicated software



Delivered with a calibration to 15 mT



USB interface

HallinSight® is a technology developed by **Fraunhofer Institute for Integrated Circuits** brought to you by Metrolab.

ABOUT METROLAB



We are the **global market leader** for precision magnetometers.

Established in Switzerland in **1985**, we have won the trust of all the large physics laboratories and all leading players in Magnetic Resonance Imaging, **across the world**.

TECHNICAL CHARACTERISTICS AND ACCESSORIES

SYSTEM

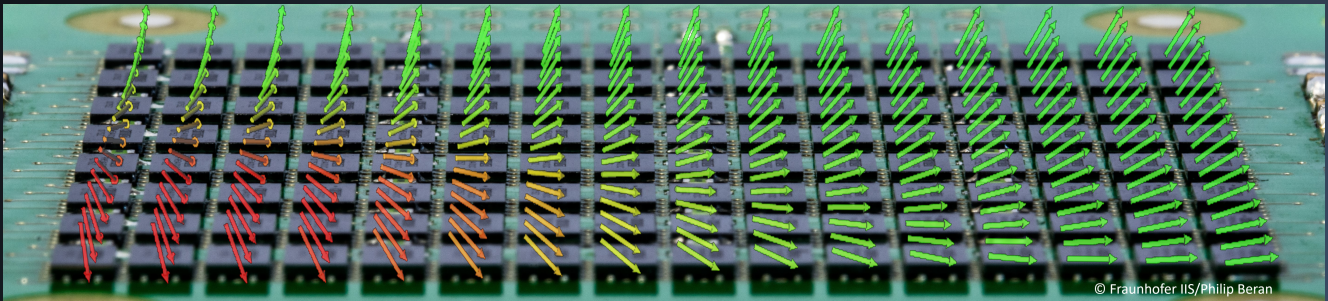
| | |
|--------------------------|--|
| MEASUREMENT PRINCIPLE | Hall sensors |
| MAGNETIC FIELD RANGE | ± 100 mT, ± 400 mT, ± 800 mT, ± 2 T |
| RESOLUTION -no avg.- | 4 μ T for ± 100 mT, 96 μ T for ± 2 T |
| NOISE | 30 μ T RMS |
| OPERATING TEMPERATURE | 10 to 30°C, integrated temperature sensor |
| MEASUREMENT RATE | Up to 1000 Hz (± 100 mT, single chip) |
| ABSOLUTE OFFSET ERROR | < 25 μ T (Typical) |
| ABSOLUTE GAIN ERROR | < 0.5% (Typical) |
| GEOMETRIC POSITION ERROR | Lateral < 50 μ m ; Vertical < 10 μ m; Orthogonality < 0.1° |
| COMPUTER INTERFACE | USB with ASCII protocol |
| SOFTWARE | LabVIEW interface for visualization, analysis, and recording |

PROBE Arrays

32x32 Hall sensors
 Measurement rate 25 Hz
 Sensor array size 80x80 mm
 Aluminum case 310x110x22.5 mm

16x16 Hall sensors
 Measurement rate 100 Hz
 Sensor array size 40x40 mm
 Aluminum case 200x60x22.5 mm

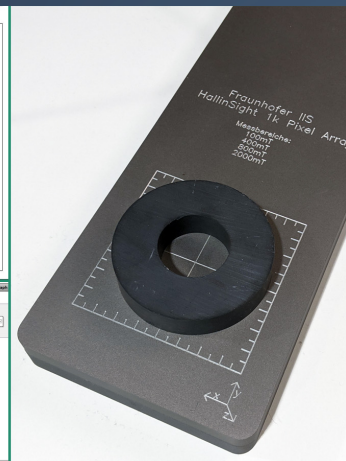
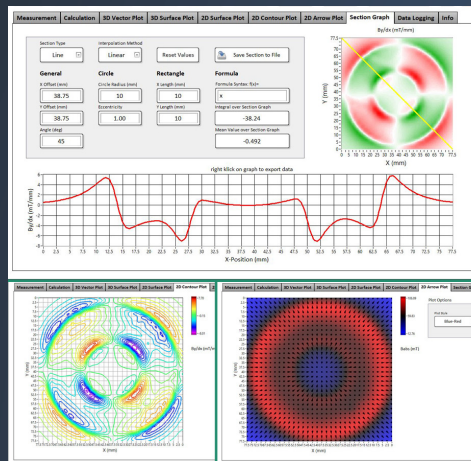
32x2 Hall sensors
 Measurement rate 250 Hz
 Sensor array size 80x2.5 mm
 PCB 106x15x2 mm



© Fraunhofer IIS/Philip Beran

HallinSight® SOFTWARE

| | |
|-------------------|---|
| OPERATING SYSTEMS | Windows 7 or Windows 10 |
| KEY MEASUREMENT | Output for each measurement point, or subset of array: Bx, By, Bz, Babs, azimuthal angle, polar angle, temperature |
| OPERATING MODE | Teslameter |
| Analysis | Calculated Spherical coordinates and field gradient values Display: 3D vector, and surface plots 2D surface, contour, and arrow plots Section graphs |



Warranty: 2 years
 Calibration interval: 18 months

Specifications are subject to change; for detailed and up-to-date specifications, see: www.metrolab.com/products/hallinsight-hall-magnetic-cameras/

METROLAB TECHNOLOGY SA

110, ch. du Pont-du-Centenaire, 1228 Geneva, Switzerland

+41 22 884 33 11

contacts@metrolab.com

www.metrolab.com

