

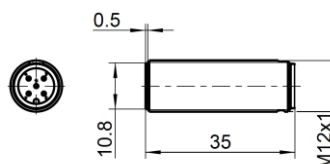
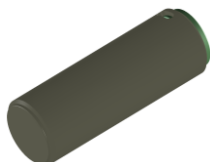
m-u-t Universal optical sensing - gesture detection

Designed for use in rough industrial and railway environment

Compliant to relevant standards EN 61326-1, EN 50155, EN 50121, EN 45545-2

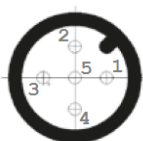
Field of application

- Non-contact gesture sensing (e.g. „waving movement“ by hand)



Overview technical characteristics

Power supply	24VDC +30% / -50%
Current consumption	< 5mA (w/o output load)
Output (digital)	configurable high-side / low-side / push-pull output (< 10 Ω) configurable short circuit current ≥ 110mA
Communication interface	Serial 1-wire-interface following IEC 61131-9 (optional)
Overall length (typical)	ca. 54mm (incl. mating angled M12 connector)
Length of housing	35mm
Diameter of housing dome	10.8mm
Thread	M12 x 1
Weight	approx. 4g
IP class	IP67 (with appropriate external connector interface)
Operating temperature	-40°C .. +55°C (class OT2 acc. EN 50155)
Start-up extended temperature	+70°C (class ST1 acc. EN 50155)
Working humidity	max. 95%, non-condensing
Connector:	M12 acc. IEC 61076-2-101, Male, A-coded 1: +24V DC 2: Not connected 3: Ground (0V DC) 4: Output 5: Do not connect / not for customer use
Detection distance	≥ min 20mm
Parameter	- Motion pattern and timing



Contact

Address: m-u-t GmbH • Am Marienhof 2 • D-22880 Wedel • GERMANY
 Phone: +49 (0)4103 / 93 08-0
 Fax: +49 (0)4103 / 93 08-99
 Internet: www.mut-group.com
 eMail: info@mut-group.com